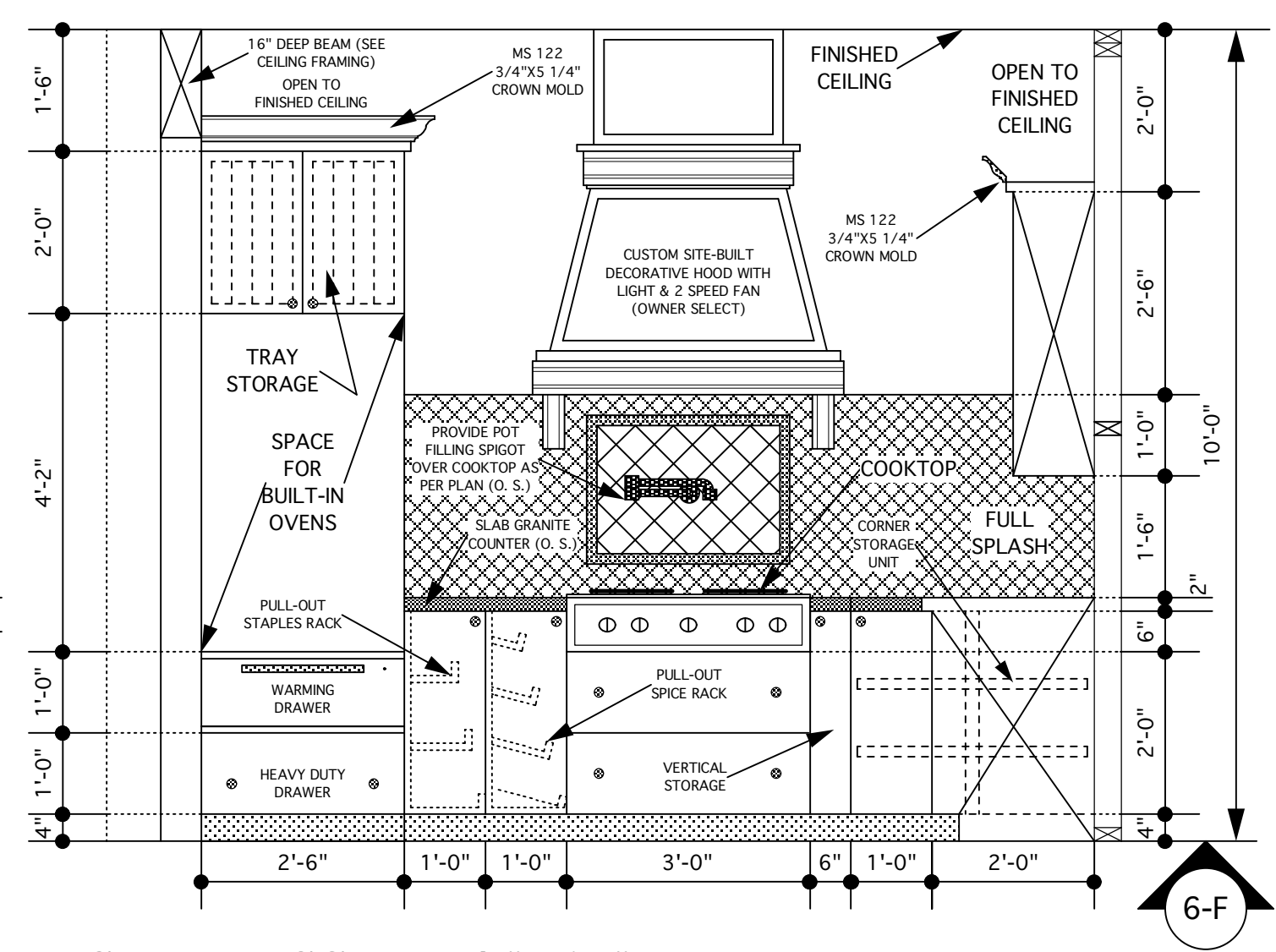
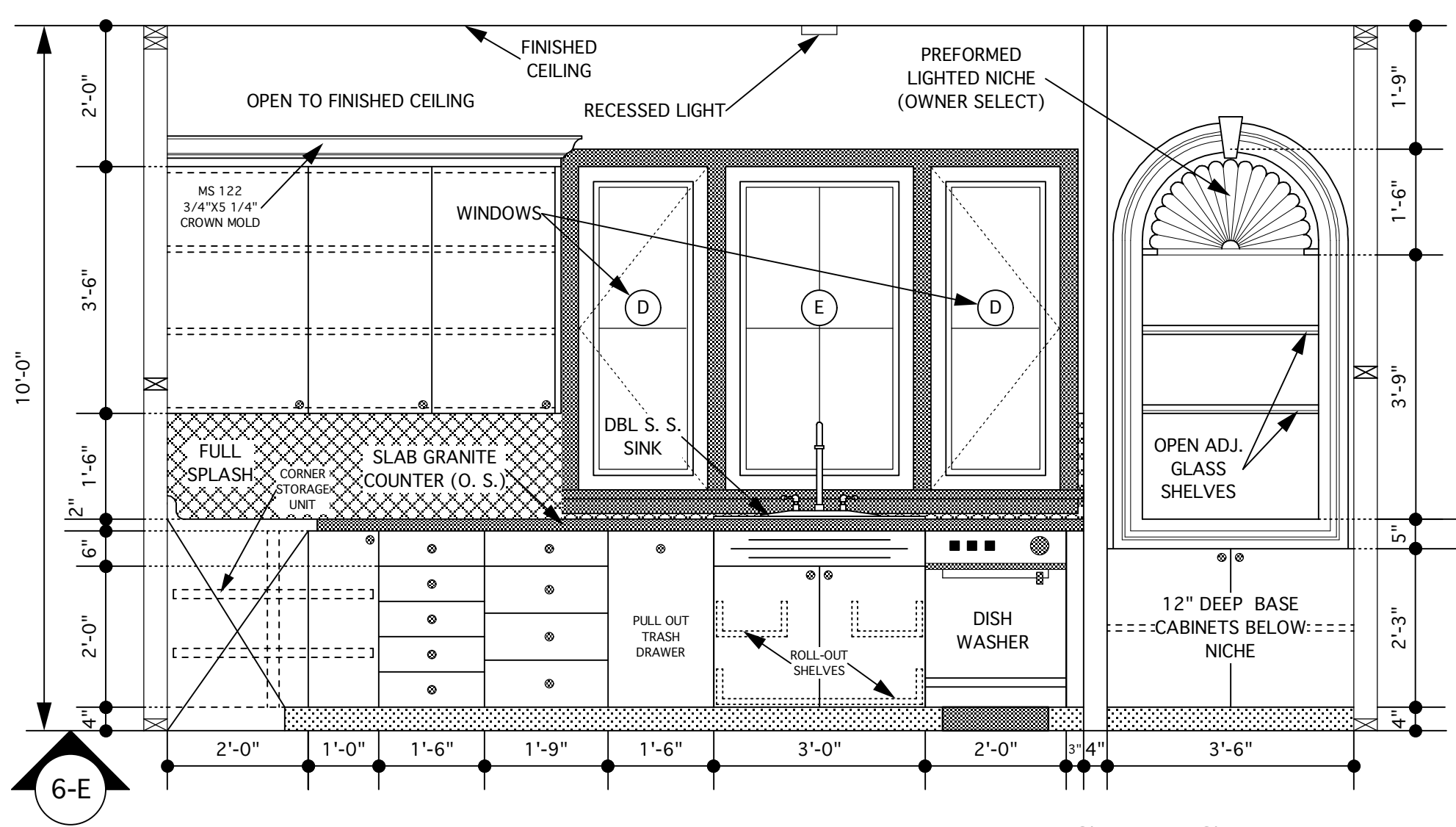
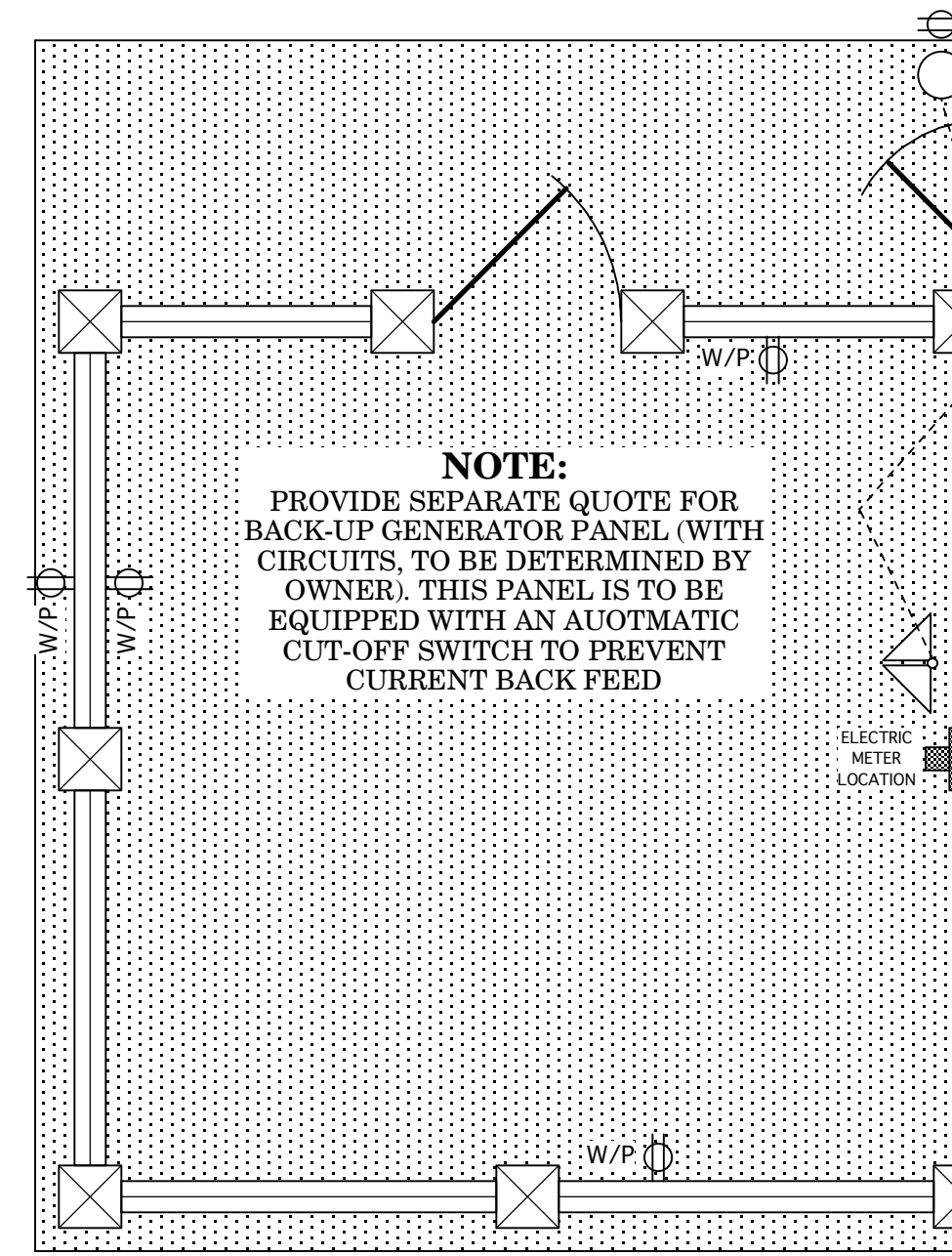
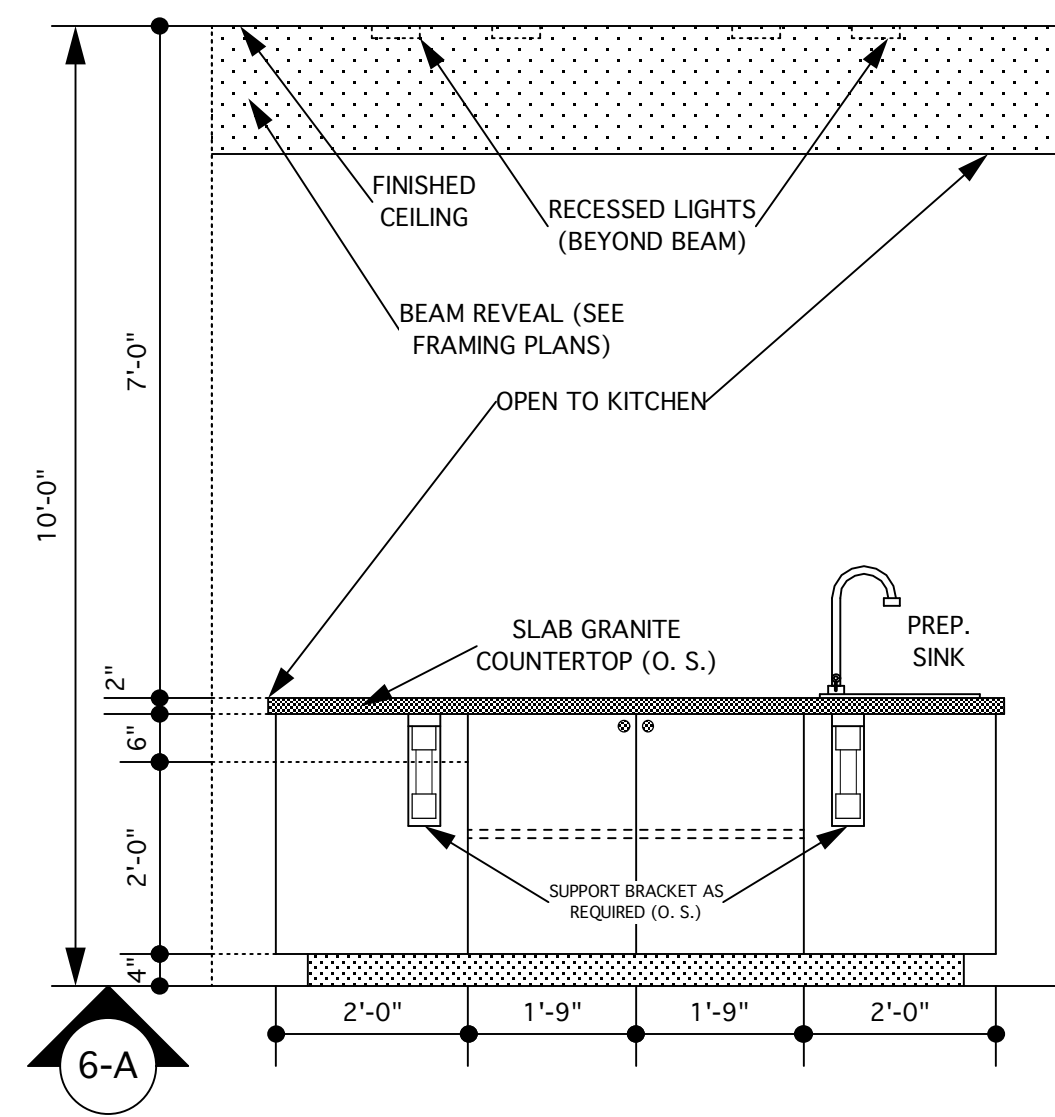


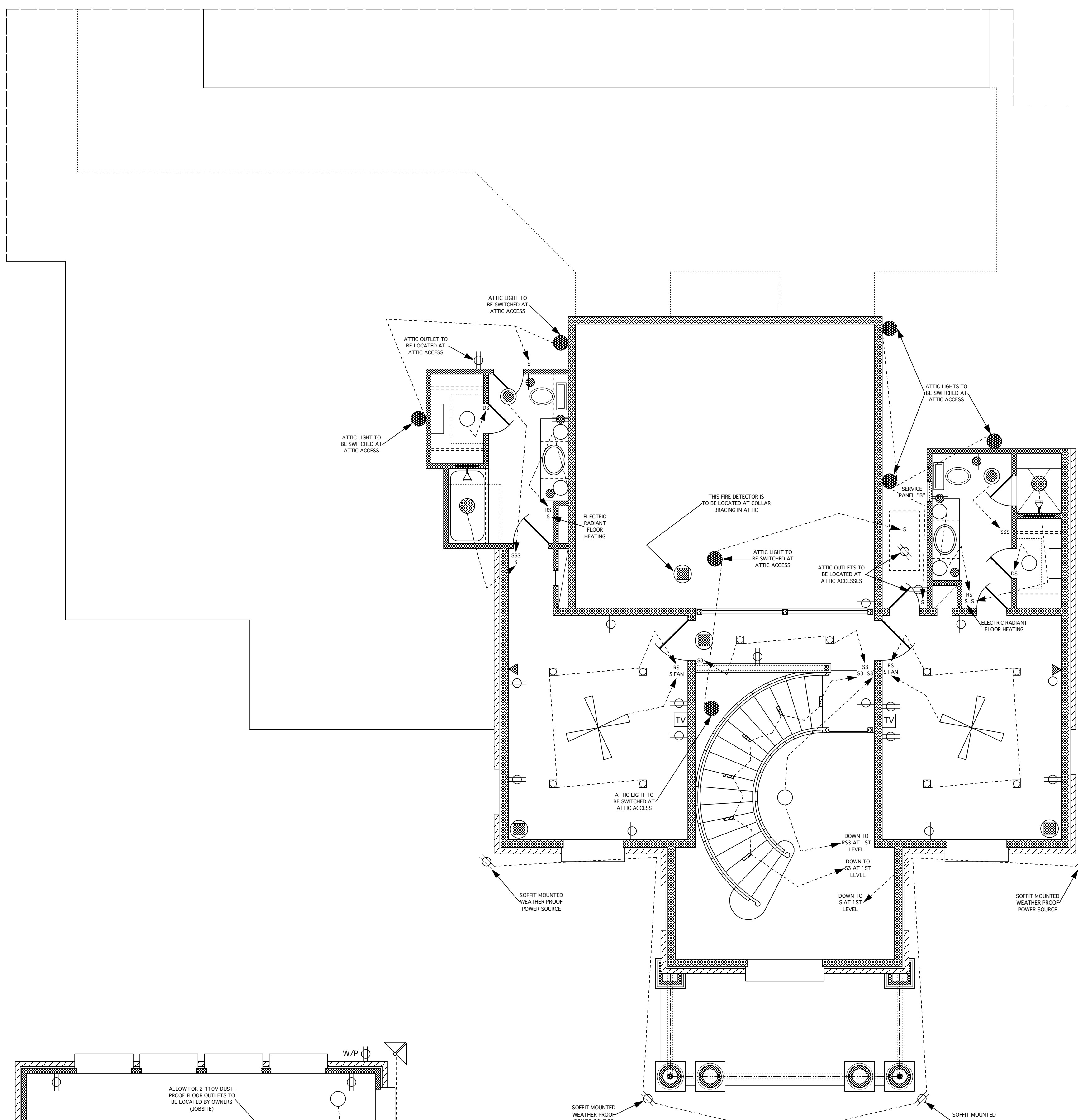
ELECTRICAL SYMBOLS CHART			
SYMBOL	DESCRIPTION	SYMBOL	DESCRIPTION
	DUPLEX CONVENIENCE OUTLET (GROUNDED TYPE)		INCANDESCENT LAMP HOLDER TO SERVE AS ATTIC LIGHT AND BE SWITCHED AT ATTIC ACCESS
	GROUND FAULT CIRCUIT INTERRUPT CONVENIENCE OUTLET		4-2" SINGLE TUBE FLUORESCENT FIXTURE
	220V OUTLET		DUSTPROOF FLOOR MOUNTED PHONE JACK TO BE LOCATED BY OWNERS (JOBSITE)
	CEILING MOUNTED 110V OUTLET FOR FUTURE/OPTIONAL DOOR LIFT		52" Ø CEILING FAN
	WEATHER PROOF OUTLET		2-1" SINGLE TUBE FLUORESCENT FIXTURE
	TELEPHONE JACK		WALL OR CEILING MOUNTED STEREO SPEAKER OUTLET TO BE CONNECTED TO AMPLIFIER LOCATED BY OWNERS
	TELEVISION ANTENNA JUNCTION BOX WITH BOTH COAXIAL CABLE AND SATELLITE DISH WIRING AS REQUIRED		RECESSED JUNGLE AIRLOC-IC INCANDESCENT "EYE-BALL" SPOT LIGHT
	DOOR BELL BUTTON		CEILING MOUNTED BROAN SENSITIVE LIGHT, VENT VENTED TO OUTSIDE ATMOSPHERE
	WALL MOUNTED CHIMES		DIMMER SWITCH
	SINGLE POLE WALL SWITCH		UNDER MOUNTED LOW VOLT-AGE LED "PUCK" LIGHT TO BE SWITCHED WITH TRANSFORMER (SEE ELECTRICAL PLAN)
	3-WAY WALL SWITCH		XENON CONTINUOUS LINEAR LIGHTING
	4-WAY SWITCH		RISE LIGHTING
	AUTOMATIC DOOR SWITCH		RISE LIGHTING TO BE EQUIPPED WITH PHOTOCELL SWITCH FOR DUSK TO DAWN LIGHTING
	CEILING OR WALL MOUNTED INCANDESCENT FIXTURE		SLOPED RECESSED "INSULATED CAN" INCANDESCENT CEILING FIXTURE
	CEILING MOUNTED HEAT, VENT, LIGHT VENTED TO OUTSIDE ATMOSPHERE (TO CODE)		1-10"X4'-0"-2' TUBE SURFACE MOUNTED FLUORESCENT CEILING FIXTURE
	WATER PROOF U.L. APPROVED CEILING MOUNTED SHOWER LIGHT		ALZAC RECESSED INCANDESCENT CEILING FIXTURE
	RECESSED "INSULATED CAN" INCANDESCENT CEILING FIXTURE		SLOPED RECESSED INCANDESCENT EXTERIOR DOWNLIGHT
	RECESSED INCANDESCENT EXTERIOR DOWNLIGHT		110V DUSTPROOF GROUND FAULT CIRCUIT INTERRUPT CONVENIENCE FLOOR OUTLET TO BE LOCATED BY OWNERS AT JOBSITE
	4'-0" LONG TRACK LIGHT SYSTEM WITH 4 SEPARATE HEADS		PENDANT LIGHT
	SOFFIT MOUNTED EXTERIOR DUAL HEAD FLOOD LIGHTS		CEILING MOUNTED CARBON MONOXIDE, SMOKE AND FIRE DETECTOR (TO CODE)
	2'-0"X4'-0"-4' TUBE SURFACE MOUNTED FLUORESCENT CEILING FIXTURE		
	CEILING FAN WITH LIGHT KIT BOTH SWITCHED SEPARATELY		



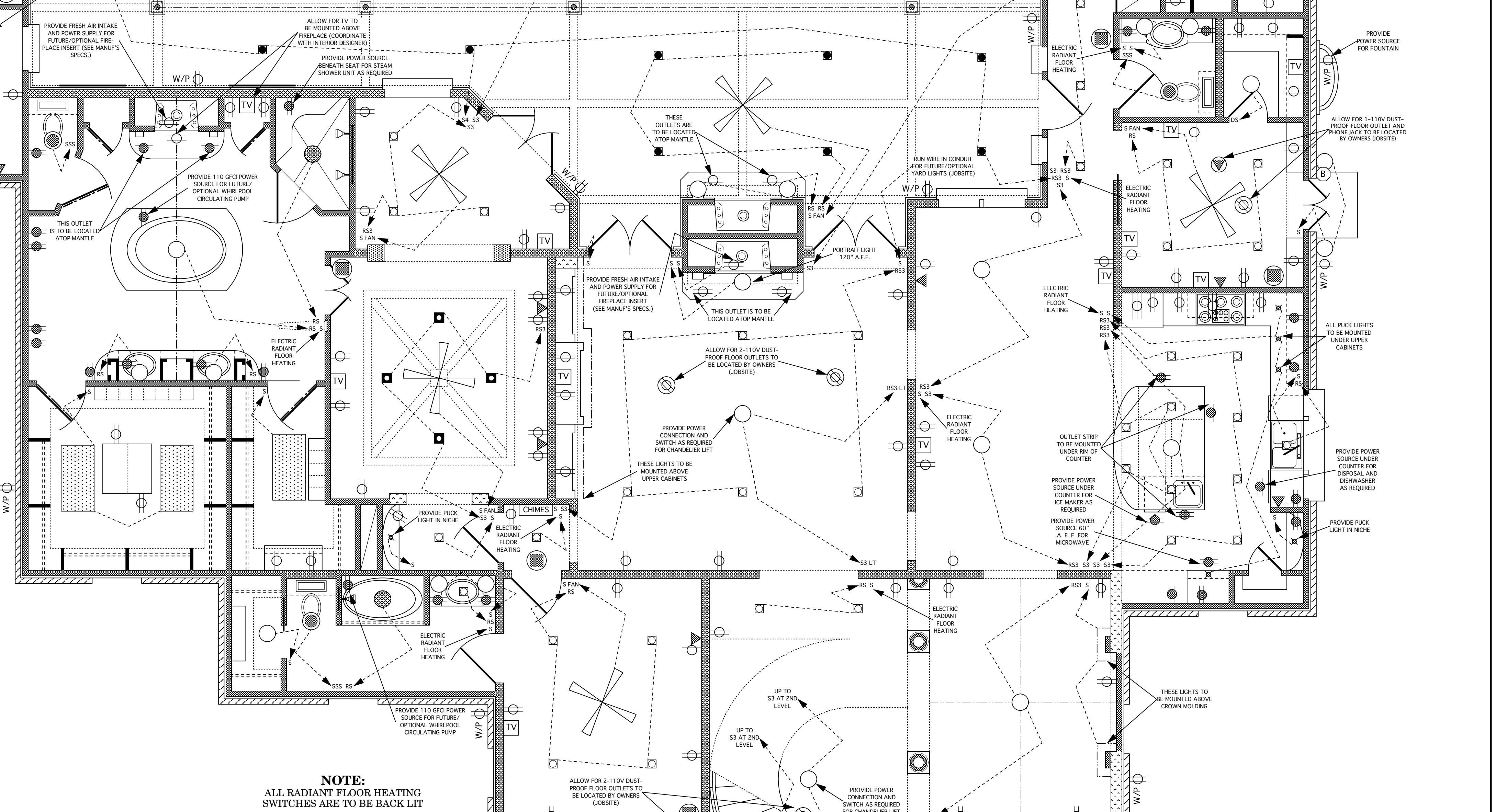
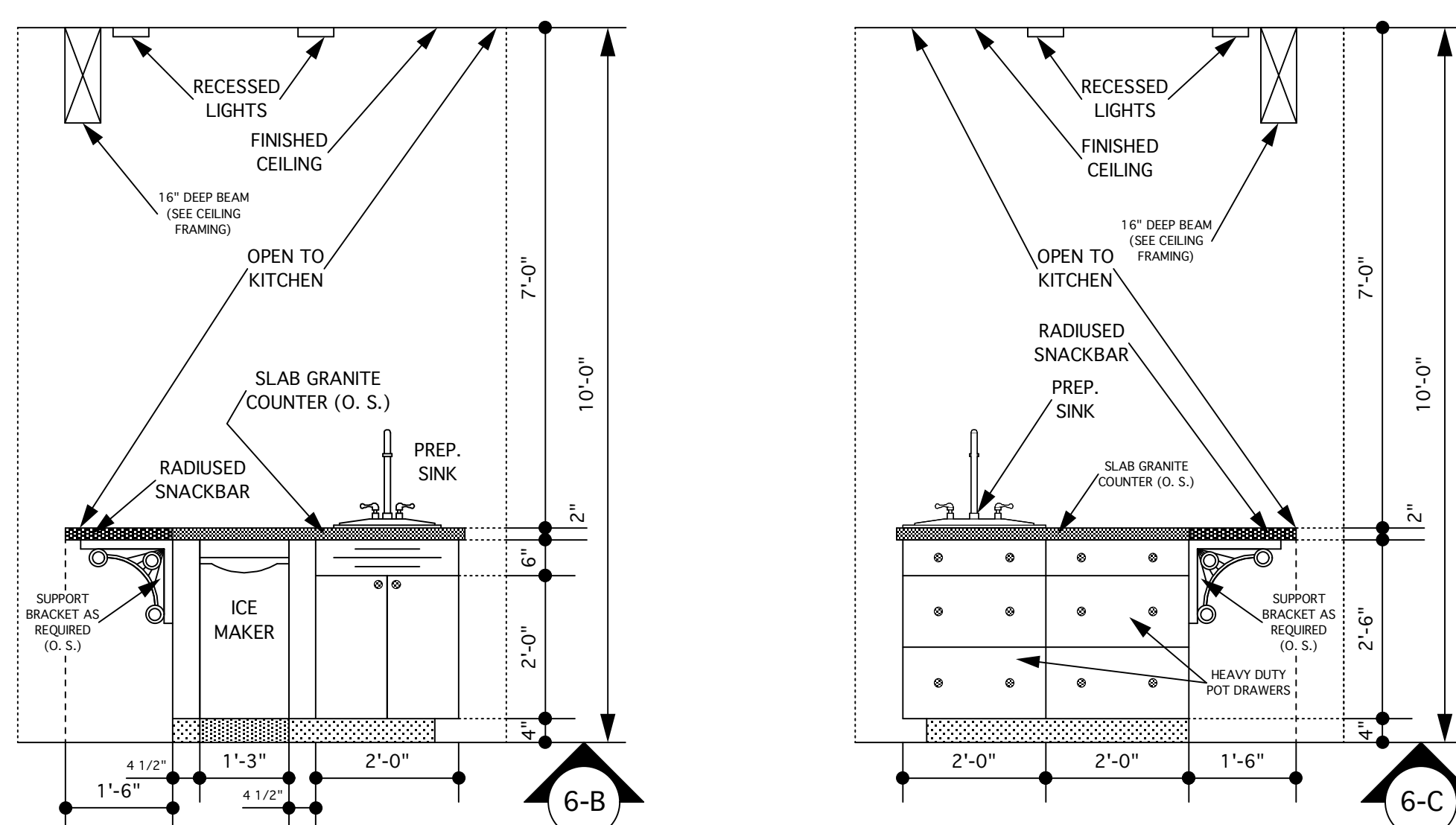
**KITCHEN CABINET DETAILS**

**SCALE 1/2"=1'-0"**

**ELECTRICAL PLAN SCALE 1/4"=1'-0"**

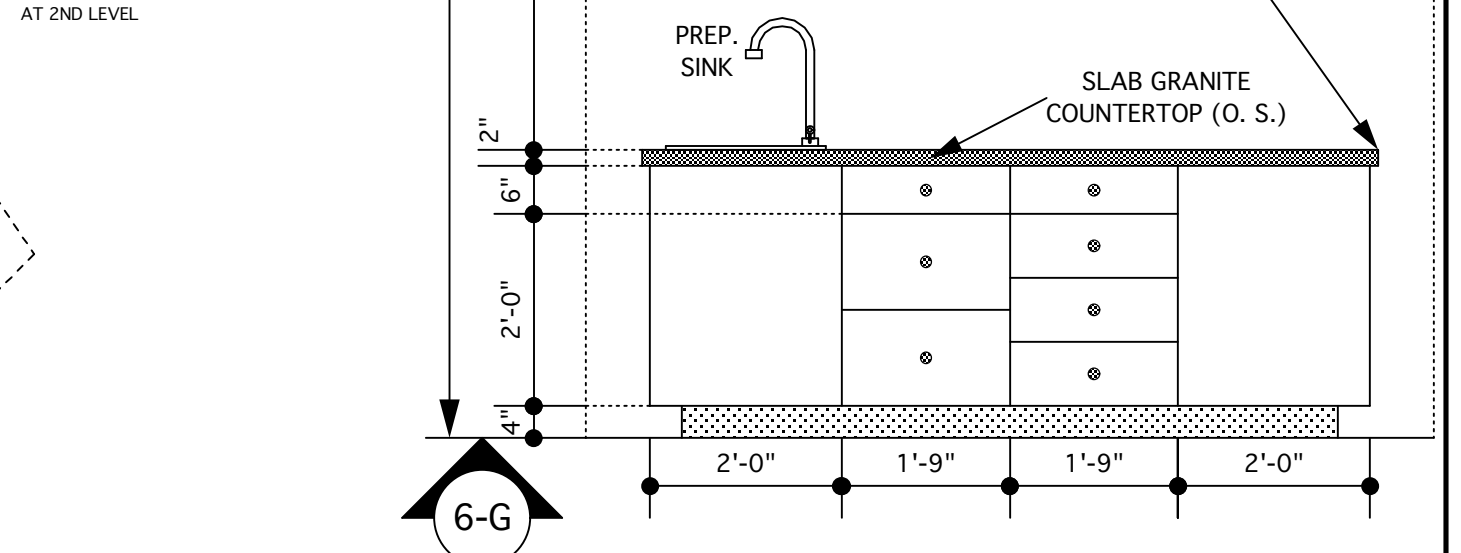


**SECOND LEVEL**



**FIRST LEVEL**

**ELECTRIC SERVICE**  
 PANEL 'A' 200 AMPS-40 CIRCUITS  
 PANEL 'B' 150 AMPS-20 CIRCUITS



EMAIL: GULLORY@COX.NET  
 WWW.YOURNEWHOMEDESIGN.COM

**CUSTOM HOME DESIGNS**  
 A LIMITED LIABILITY COMPANY  
 JOHN G. GULLORY, owner